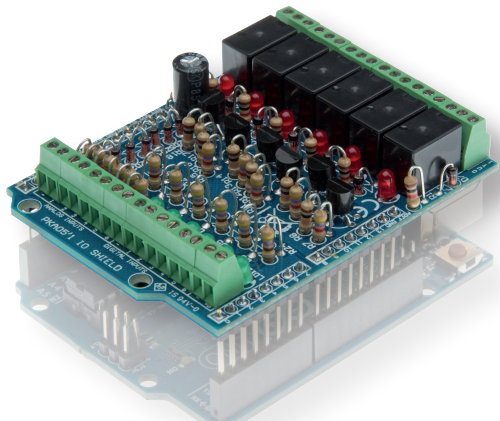


VMA05

MANUAL HVMA05'1

IN/OUT shield for Arduino®

velleman®
MODULES



General purpose INPUT - OUTPUT shield for Arduino®

Features

- For use with Arduino Due™, Arduino Uno™, Arduino Mega™
- 6 analog inputs
- 6 digital input
- 6 relay contact outputs
- Indicator leds for relay outputs and digital inputs

Specifications

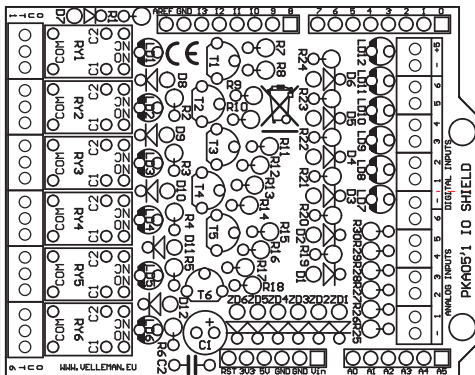
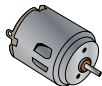
- Analog inputs: 0..+5VDC
- Digital inputs: dry contact or open collector
- Relays: 12V
- Relay contacts: NO/NC 24VDC/1A max.
- Dimensions: 68 x 53mm / 2.67 x 2.08"





Participate our Velleman Projects Forum

1 OUTPUT
MAX. 24VDC / 1A



2 DIGITAL INPUTS



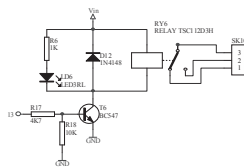
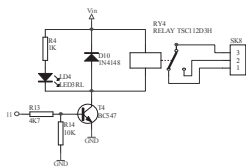
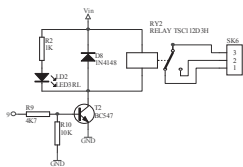
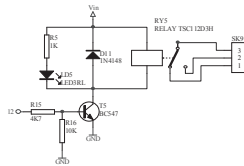
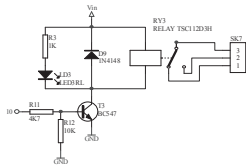
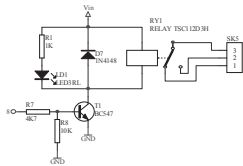
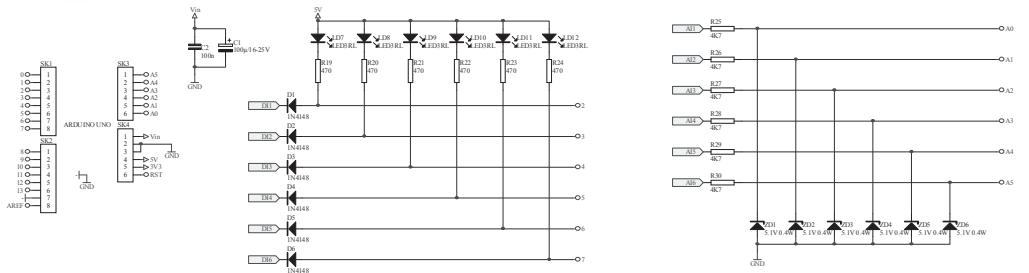
101011101011001...

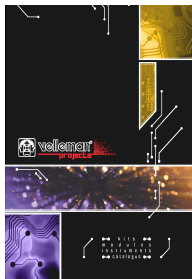
...

3 ANALOG INPUTS 0 .. 5V



DOWNLOAD SAMPLE CODE FROM KA05 PAGE ON WWW.VELLEMAN.BE





The new Velleman Projects catalogue is
now available. Download your copy here:
www.vellemanprojects.eu



Modifications and typographical errors reserved - © Velleman nv. HVMA05
Velleman NV, Legen Heinweg 33 - 9890 Gavere.